

DISWASHER PASS THROUGH

GS-83 M

Features

External dimensions.	775 x 750 x 1440 mm.
Weight.	110 Kg.
Dimensions of racks.	500 x 500 mm.
Output racks hour.	30 / 60
Output hour.	640 / 960 plates.
Usable height.	400 mm.
Total power.	7,5 Kw.
Wash pump power.	1,5 Kw. 500 l/min.
Boiler element heater.	6 Kw. Triphasic
Tank element heater.	6 Kw. Triphasic
Voltaje.	400V. / III / 50-60 Hz. 230V. / III / 50-60 Hz.
Wash cycle.	1 / 2 minutes
Water consumption by rinsing.	3 Litres
Wash tank.	58 Litres
Boiler capacity.	8 Litres
Numbers of wash arms upper.	4
Numbers of wash arms bottom.	4
Numbers of jets.	48
ø jets.	ø 6 mm.
Rinse jets upper.	8
Rinse jets bottom.	8
Water inlet.	3/4"
Pressure for the water supply.	2 - 4 bars. 200 - 400 Kpa.
Required flow.	30 Litres / minute aprox.
Drain.	ø ext. valve 28 mm. ø tube 32 mm. ext.

Endowment

- 2 Plates racks
- 1 Universal rack
- 2 Cutlery basket
- 1 Water inlet hose
- 1 Drain hose



Control panel

High-visibility front and easy to use.



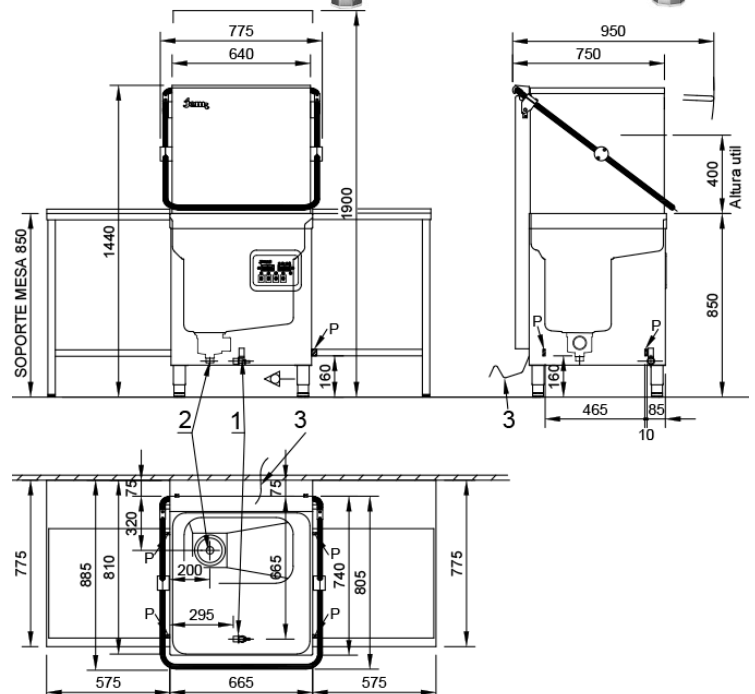
Extraction arms

.Extraction system
Arms straight forward PULL UP
For easy cleaning..



Tanks

AISI 316 stainless steel
rounded-corner pressed
tank without welding



Index

1. Water inlet 3/4" max.60° C.
 2. Drain ø 50 mm.
 3. Cable length 1,5 m.
230V. III 4x6 mm.
400V. 5x4 mm.
- Power: 230 V. / III / 7,5 Kw.
400 V. / III / 7,5 Kw.

