



**Front Loading
Dishwashers**

**Pass Through
Dishwashers**

Jemi **Simply
built to last**

Professional Dishwashing
and Cooking Equipment



power
is the
key

Jemi Simply
built to last

Simply built to last

Leaders in the manufacturing of professional dishwashers and prime cooking equipment for use in the hospitality and foodservice business. Established worldwide reputation, over 50 years within the industry.

- ✓ Quality and reliable products that last.
- ✓ Commitment and familiarity with our clients.
- ✓ Excellent technical and aftersales service, with fast and efficient response.

Front Loading

Selection of Under Counter Glass and Dishwashers for a range of applications.



Pass Through

Selection of Pass Through Dishwashers designed for dishes and kitchenware to pass through a linear system situated at a comfortable height with pre wash and exit clean tables.





Excellent results

High quality of finishes. Maximum care, impeccable results and perfect sanitation of the dishes and kitchenware.

Fixed washing arm system

Exclusive washing arms which give coverage to all of the washing area maintaining continuous and consistent power throughout the cycle.

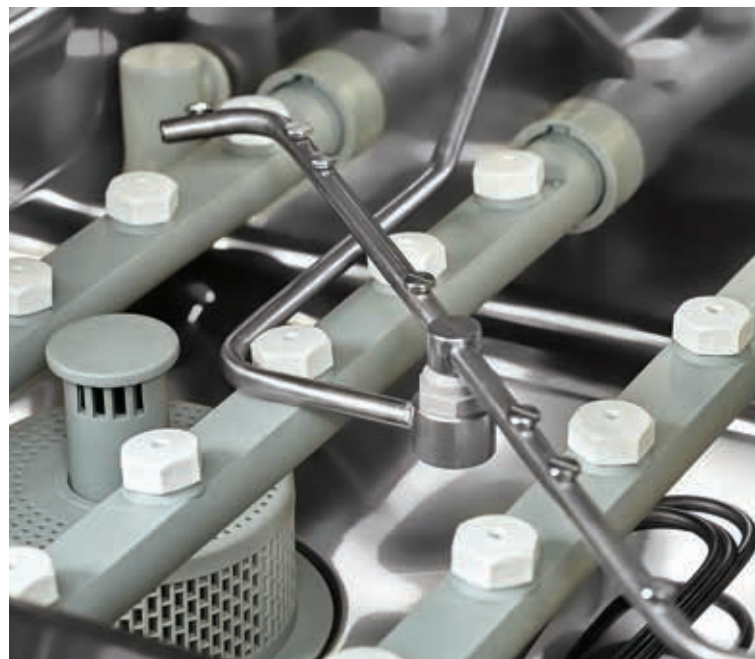
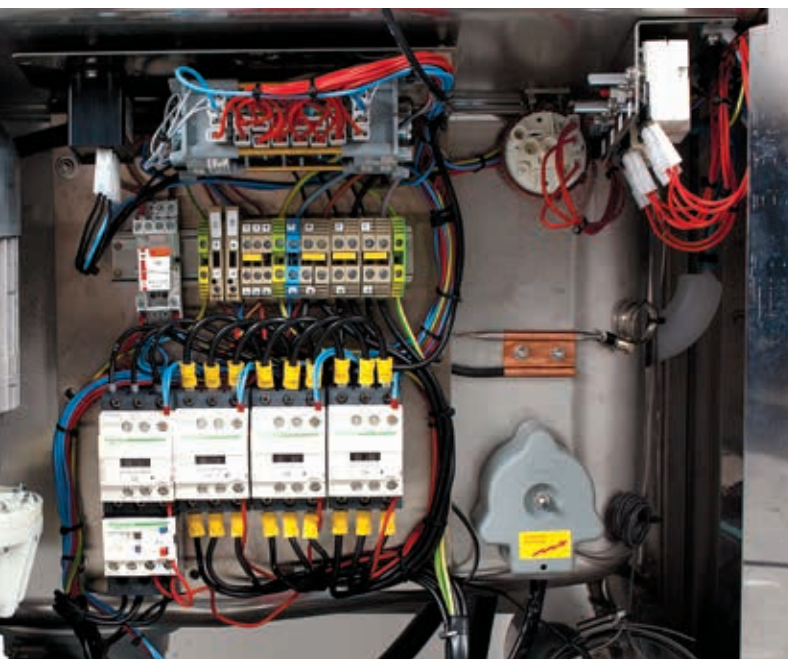
Design and Technology

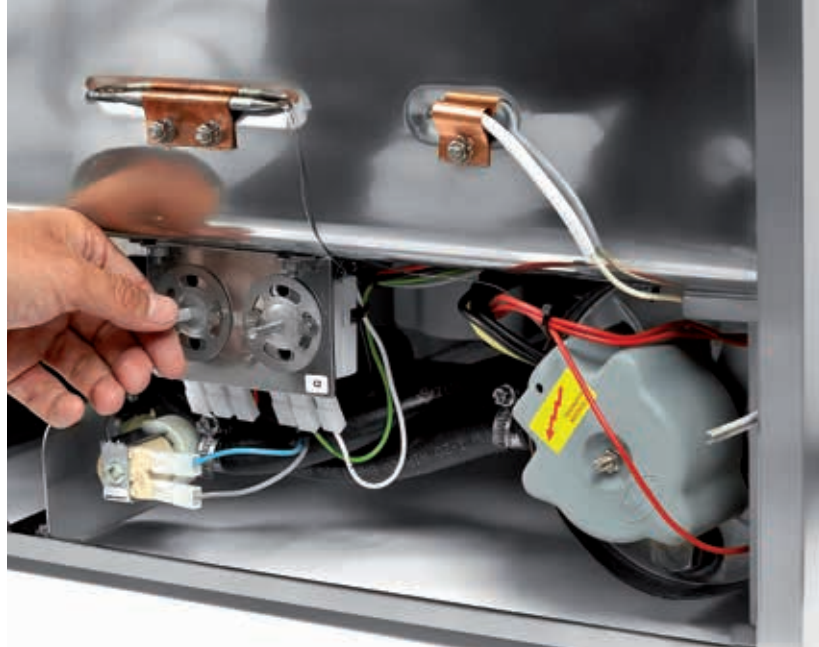
Electromechanics

The parts are developed to prevent failure and, in the event of failure, they are fast and easy to repair and replace.

Cleaning the equipment

Filter systems specifically designed to maintain optimum conditions within the machine at all times.





Access and assistance

Front access, especially developed for fast and easy technical assistance, which does not require moving the machine.

Innovation and design

New fresh and innovative design of the Front Loading range, whilst maintaining brand recognition.

Robust and durable

Our machines are built using high-quality materials, which are created to last and offer maximum efficiency for the longest time possible.

Versatile

Wide range of models and solutions for the washing needs of each client.









Jemi



Front Loading

For washing...

 Glasses	 Cups
 Wine glasses	 Saucers
 Cutlery	 Plates

Options

BD Drainage Pump	BT Break tank
DD Detergent Dosing Unit	TD Digital Thermometer
BP Pressure Pump	DI Internal Water Softener

Accessories

P25 25 cm stand
P40 40 cm stand
FC Tank Filter

Accessory

Tank Filter

- ✓ Better cleaning
- ✓ Stainless steel
- ✓ Two pieces for easy removal



Features



New washing arm pull out system
PULL UP

AISI 304 stainless steel round body. Uniform automatic welding.

Double wall and pressed guides. Spring-actuated double pressed door for smooth opening and closing.

2 mm-thick stand.

Wash cycle 2 minutes
-
Water consumption per cycle 2.3 litres

New washing height of 380 mm for 500 x 500 mm rack models





GS-5



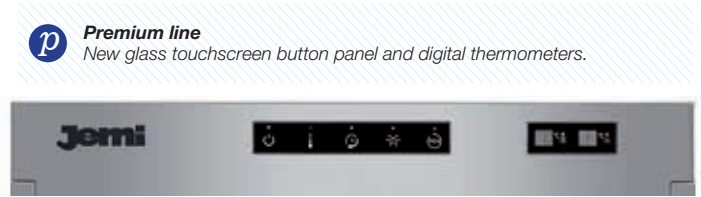
Dimensions of rack 400 x 400 mm
Output/hour 1.000 glasses
Usable height 220 mm
Voltage and power 230 II 2,7 kW single phase
Cycle 2 minutes

650 mm *Options / Accessories*
BD DD BP BT TD DI
P25/40
 480 mm 550 mm



Efficient line

New push button / switch panel and analogue thermometers.



Premium line

New glass touchscreen button panel and digital thermometers.



GS-5 AF



Dimensions of rack 400 x 400 mm
Output/hour 1.000 glasses / 350 plates
Usable height 290 mm
Voltage and power 230 II 2,97 kW single phase
Cycle 2 minutes

720 mm *Options / Accessories*
BD DD BP BT TD DI
P25/40
 480 mm 550 mm



GS-6 AF



Dimensions of rack 400 x 400 mm
Output/hour 1.000 glasses / 350 plates
Usable height 290 mm
Voltage and power 230 II 2,97 kW single phase
Cycle 2 minutes

720 mm *Options / Accessories*
BD DD BP BT DI
P25/40
 480 mm 550 mm



GS-16



Dimensions of rack 500 x 500 mm
Output/hour 1.440 glasses / 480 plates
Usable height 380 mm
Voltage and power 230 II 3,35 kW single phase
Cycle 2 minutes

820 mm *Options / Accessories*
BD DD BP BT TD DI
P25/40 FC
 580 mm 650 mm



GS-17



Dimensions of rack 500 x 500 mm
Output/hour 1.440 glasses / 480 plates
Usable height 380 mm
Voltage and power 400 III 5,25 kW three phase
Cycle 2 minutes

820 mm *Options / Accessories*
BD DD BP BT TD DI
P25/40 FC
 580 mm 650 mm



GS-18



Dimensions of rack 500 x 500 mm
Output/hour 1.440 glasses / 480 plates
Usable height 380 mm
Voltage and power 230 II 3,35 kW single phase
Cycle 2 minutes

820 mm *Options / Accessories*
BD DD BP BT DI
P25/40 FC
 580 mm 650 mm



GS-19



Dimensions of rack 500 x 500 mm
Output/hour 1.440 glasses / 480 plates
Usable height 380 mm
Voltage and power 400 III 5,25 kW three phase
Cycle 2 minutes

820 mm *Options / Accessories*
BD DD BP BT DI
P25/40 FC
 580 mm 650 mm

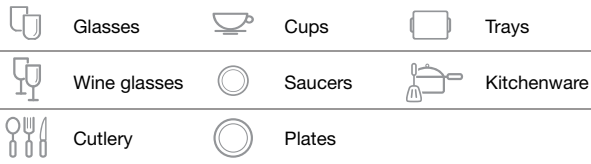


Jemi



Pass Through Dishwashers

For washing...



Options / Accessories

BD Drainage Pump	EPS EPS System	OM Single Phase Option
DD Detergent Dosing Unit	BT Break Tank	PT Rear Panel
BP Pressure Pump	CD Double hood	TD Digital thermometer
EA Automatic lifting		

Features



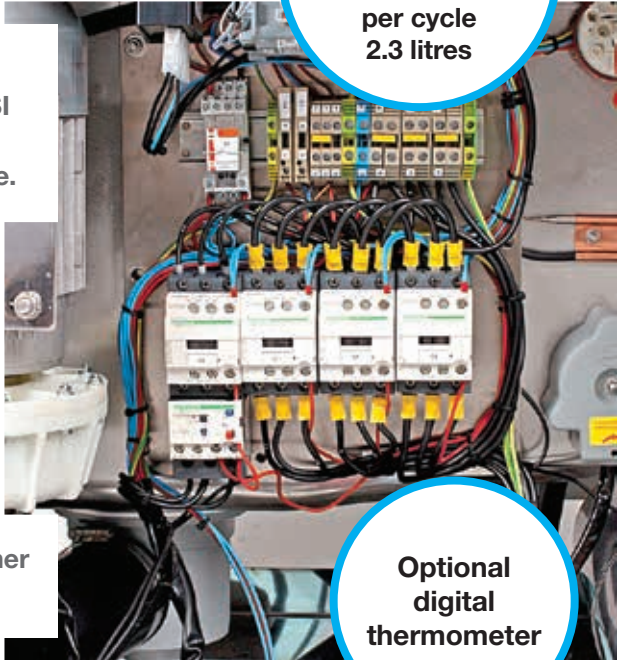
New washing arm pull out system
PULL UP

Wash Cycle 1 and 2 minutes -
Water consumption per cycle 2.3 litres



2 mm-thick stand and AISI 304 stainless steel structure.

AISI 316 stainless steel rounded-corner pressed tank without welding.



Optional digital thermometer



Automatic cycle start hood system.



GS-83 ECO



Dimensions of rack 500 x 500 mm
Output/hour 640 plates
Usable height 400 mm
Voltage and power 230/400 III 6,75 kW three phase
Cycle 2 minutes

Options / Accessories

BD DD BP EPS BT CD OM PT TD



1440 mm
775 mm
750 mm

GS-83 M



Dimensions of rack 500 x 500 mm
Output/hour 640 / 960 plates
Usable height 400 mm
Voltage and power 230/400 III 7,5 kW three phase
Cycle 1 and 2 minutes

Options / Accessories

BD DD BP EPS BT CD OM PT TD



1440 mm
775 mm
750 mm

GS-85



Dimensions of rack 500 x 500 mm / 500 x 600 mm
Output/hour 640 / 960 plates
Usable height 540 mm
Voltage and power 230/400 III 10,5 kW three phase
Cycle 1 and 2 minutes

Options / Accessories

BD DD BP EPS BT CD PT TD



1580 mm
875 mm
765 mm

GS-102 M



Dimensions of rack 2 of 500 x 500 mm
Output/hour 1.280 / 1.920 plates
Usable height 400 mm
Voltage and power 230/400 III 15 kW three phase
Cycle 1 and 2 minutes

Options / Accessories

BD DD BP EPS BT CD PT TD EA



1580 mm (GS-105 M)
1440 mm (GS-102 M)
1410 mm
750 mm

GS-105 M



Dimensions of rack 2 of 500 x 500 mm / 1 of 1210 x 500 mm
Output/hour 1.280 / 1.920 plates
Usable height 500 mm
Voltage and power 230/400 III 15 kW three phase
Cycle 1 and 2 minutes

Options / Accessories

BD DD BP EPS BT CD PT TD EA

25%
ENERGY
SAVING

EPS

System

ENERGY RECOVERY AND
STEAM CONDENSING
SYSTEM



Jemi Simply
built to last

visit us at
www.jemi.es

commercial
information

technical
information







Jemi Simply
built to last

Professional Dishwashing
and Cooking Equipment

Selva de Mar, 122-128
08020 Barcelona, Spain
Tel. 0034 93 308 31 54
Fax. 0034 93 303 38 73
jemi@jemi.es
www.jemi.es